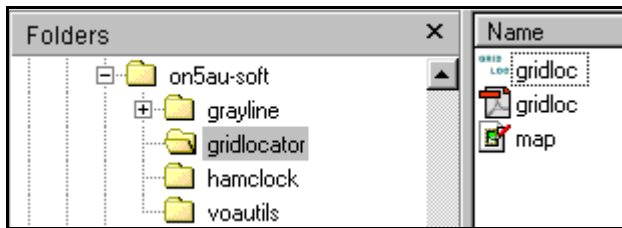


GRIDLOCATOR MANUAL

HOW to INSTALL?



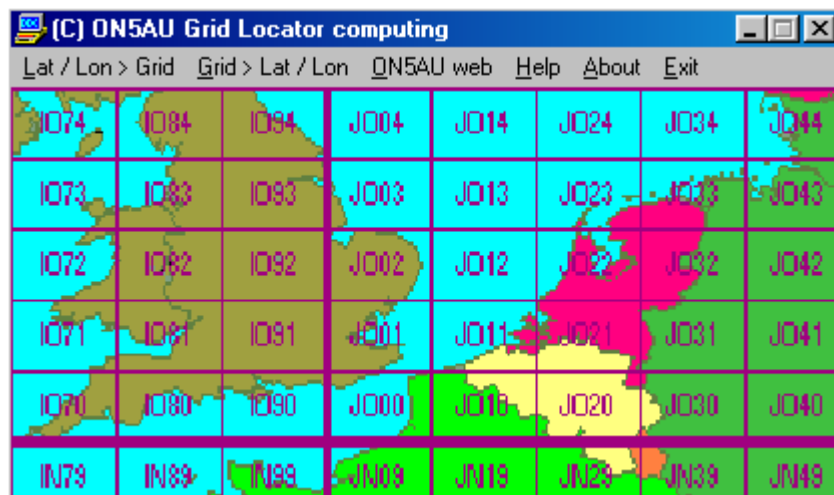
Double Click the icon of the downloaded **gridloc_install** file. This will create **C:\on5au-soft\gridlocator** folder and extract the 3 files: **gridloc.exe** – **space.gif** and **gridloc.pdf**, and **map.gif**



Make if you wish, a program shortcut to your desktop

MENU-BAR

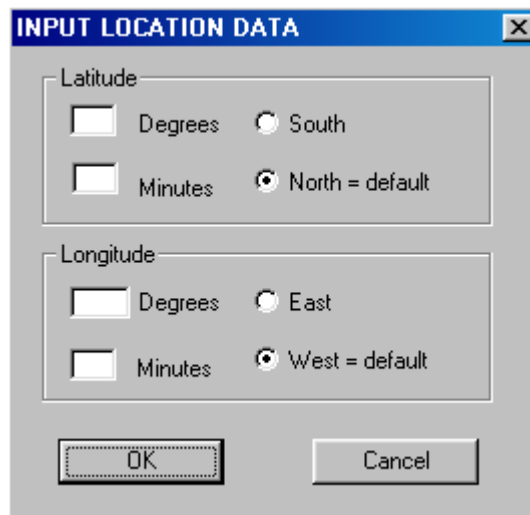
Lat / Lon > Grid – Grid > Lat / Lon – ON5AU web – Help – About – Exit



The main window.

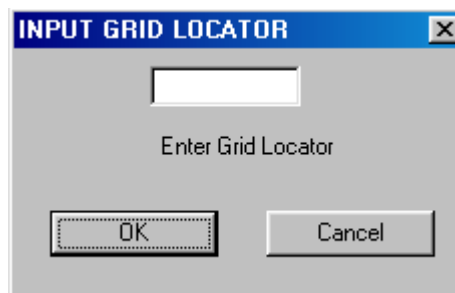
Lat / Lon > Grid Activates the dialog box input Latitude / Longitude coordinates.

Grid / Lat / Lon Activates the dialog box input grid locator.



The dialog box titled "INPUT LOCATION DATA" has a blue title bar with a close button. It contains two sections: "Latitude" and "Longitude". Each section has two input fields (checkboxes) and two radio buttons. In the "Latitude" section, the "Degrees" checkbox is checked, and the "North = default" radio button is selected. In the "Longitude" section, the "Degrees" checkbox is checked, and the "West = default" radio button is selected. At the bottom, there are "OK" and "Cancel" buttons.

The input Latitude / Longitude dialog box.



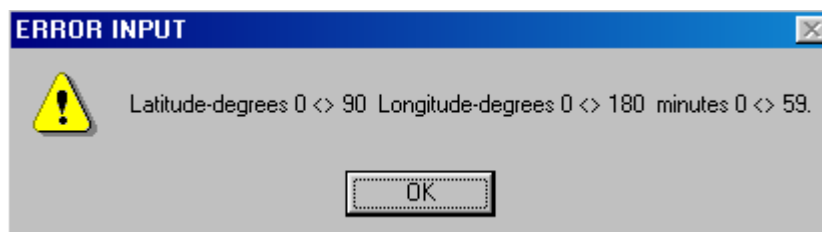
The dialog box titled "INPUT GRID LOCATOR" has a blue title bar with a close button. It features a single text input field at the top. Below the input field is the text "Enter Grid Locator". At the bottom, there are "OK" and "Cancel" buttons.

The input locator dialog box.

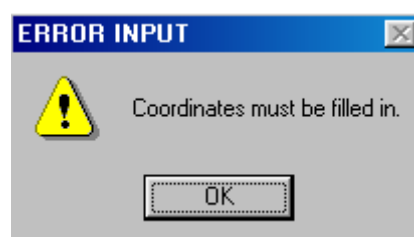
When a latitude / Longitude or a grid locator input are not correct then several error messages are displayed.



The dialog box titled "ERROR INPUT" has a blue title bar with a close button. It contains a yellow warning triangle icon on the left and the text "Locator must be valid." on the right. At the bottom, there is an "OK" button.

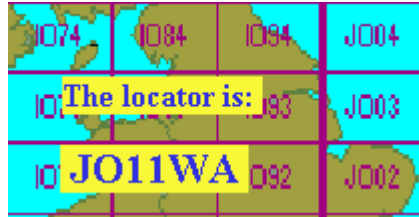


The dialog box titled "ERROR INPUT" has a blue title bar with a close button. It contains a yellow warning triangle icon on the left and the text "Latitude-degrees 0 <> 90 Longitude-degrees 0 <> 180 minutes 0 <> 59." on the right. At the bottom, there is an "OK" button.



The dialog box titled "ERROR INPUT" has a blue title bar with a close button. It contains a yellow warning triangle icon on the left and the text "Coordinates must be filled in." on the right. At the bottom, there is an "OK" button.

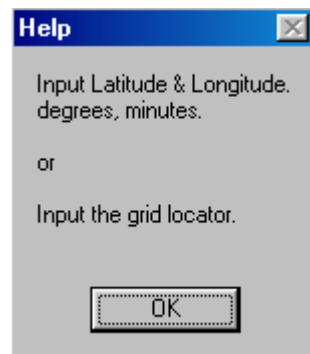
When the Lat / Lon input was correct, its grid locator is displayed within the main screen.



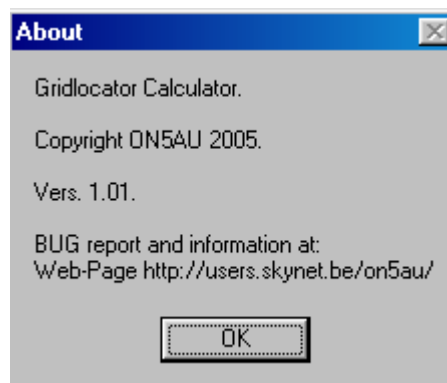
When the grid locator input was correct its Lat / Lon coordinates are displayed within the main screen.



Help The **Help** option displays a brief notice message screen.



About The **About** option displays some info and the program Version.



ON5AU Option connect you to my website, where you can find monthly Predictions as hourly prediction graphs for the beacons and for the 40 CQ-DX zones. Also **On-Line** (2 hour log screens) live **NCDXF / IARU** worldwide Beacons monitoring, to allow you to compare predictions and the real propagation properties.

Exit Closes the program.

GRIDLOC
© Copyright 2005 ON5AU
LICENSE AGREEMENT

1. LICENSE GRANT

Marcel H. De Canck, ON5AU, (the "AUTHOR") grants you a non-exclusive license to install and use the GRIDLOC software program (the "SOFTWARE") for non-commercial purposes only, on any computer, as long as the terms of this agreement are respected. Businesses and government agencies should contact the AUTHOR to make licensing arrangements.

2. OWNERSHIP

The SOFTWARE is owned and copyrighted by the AUTHOR. Your license confers no title or ownership in the SOFTWARE and should not be construed as a sale of any right in the SOFTWARE.

3. COPYRIGHT

The SOFTWARE is protected by Belgium copyright law and international treaty provisions. You acknowledge that no title to the intellectual property in the SOFTWARE is transferred to you. You further acknowledge that title and full ownership rights to the SOFTWARE will remain the exclusive property of the AUTHOR, and you will not acquire any rights to the SOFTWARE except as expressly set forth in this license. You agree that any copies of the SOFTWARE will contain the same proprietary notices that appear on and in the SOFTWARE.

4. ADDITIONAL RESTRICTIONS

A. You shall not and shall not permit other persons or entities to sell, rent, lease, modify, translate, reverse engineer, decompile, disassemble or include in other software the SOFTWARE or any component thereof, or create derivative works based on GRIDLOC.

B. You shall not and shall not permit other persons or entities to remove or obscure copyright, trademark or other proprietary notices or legends from any of the materials contained in the SOFTWARE package.

5. DISCLAIMER OF WARRANTY

A. The SOFTWARE and documentation are provided "AS IS" and the AUTHOR disclaims all other warranties and conditions, whether expressed, implied, or statutory, including, but not limited to, fitness for a particular purpose, conformance with description, and non-infringement of third party rights. The AUTHOR does not guarantee that this SOFTWARE is free from bugs or free from computer viruses.

B. To the maximum extent permitted by applicable law, in no event shall the AUTHOR be liable for any indirect, incidental, consequential, special or exemplary damages or costs incurred arising out of the use or inability to use the SOFTWARE, even if the AUTHOR has been advised of the possibility of such damages.

C. The AUTHOR may, from time to time, revise or update the SOFTWARE. In so doing, the AUTHOR incurs no obligation to furnish such revision or updates to you.

6. GOVERNING LAW

This license shall be construed, interpreted, and governed by the laws of the country of Belgium.

WETTEREN (BELGIUM) 19 August 2005.
ON5AU. M.H. De Canck.